



Welcome to Ruminant Health & Welfare

Welcome to the latest newsletter from Ruminant Health & Welfare. It has been a busy couple of months since our last newsletter, including two excellent workshops to which we were lucky in having between 50 and 70 farming, veterinary, research and industry experts contribute. We discussed the priorities, existing interventions and the gaps where RH&W could facilitate or speed progress and overcome barriers.

After our disease workshop we announced our bold plans to eradicate sheep scab and BVD by 2031, as well as reduce dairy cow lameness by 30% year-on-year. We are going into a period of extraordinary change and we have got to be willing to push back on the accepted boundaries of health and production.

Through our welfare workshop we identified several welfare challenges and positive interventions. This led to the conclusion that increased pain management would offer immediate opportunities to improve ruminant welfare across the UK at little extra cost.

You can read more about the workshops in this newsletter, as well as our usual updates from the industry.

With a busy summer ahead on the farm, our next update will be in September – so I'll look forward to bringing you a further update on our activities then.

Please follow us on [Twitter](#) - to keep up to date with the latest news.

In the meantime, please contact us or send feedback to secretary@ruminanthw.org.uk and let us know if there are issues or stories you feel we should cover in the next update. I look forward to hearing from you.

Nigel Miller
Chair
RH&W



Pain management is quickest route to improved animal welfare

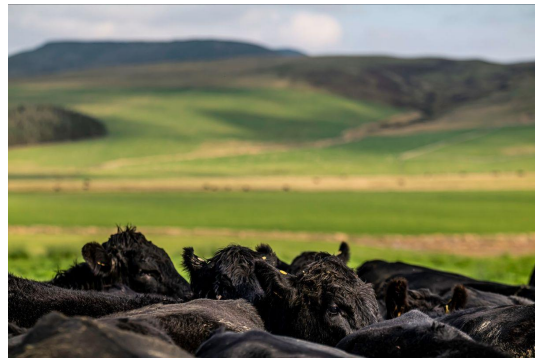
Increased use of pain management would offer immediate opportunities to improve ruminant welfare across the UK at little extra cost, according to views captured at our welfare workshop.

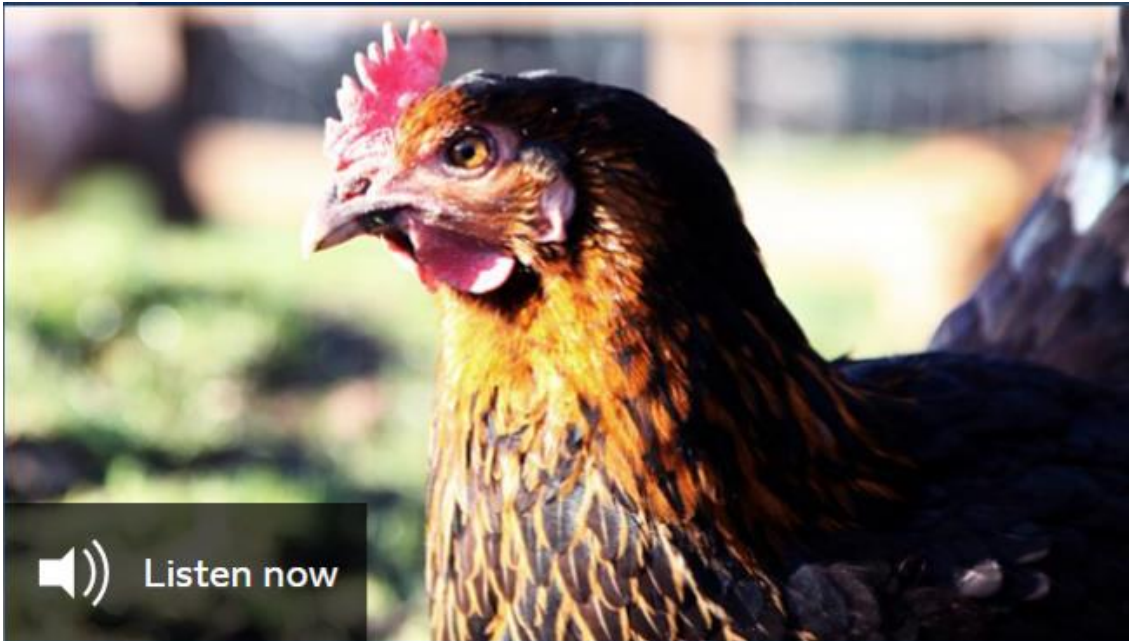
[Read the full story here.](#)

Bold plans to eradicate BVD and sheep scab by 2031

The livestock industry has set out bold ambitions to eradicate sheep scab and Bovine Viral Diarrhoea (BVD) by 2031, and cut lameness in dairy cows by 30% year-on-year, following our disease workshop held on 29 June.

[Read the full story here.](#)





Listen now

14/07/21 - Carbon neutral cheddar, Eradicating scab in sheep, Kent agriculture show

A dairy in Somerset has started producing the first carbon-neutral cheddar cheese as part of a supermarket drive to cut emissions. Presented by Anna Hill.

27 days left to listen
🕒 13 minutes

Farming Today

Following the release of our press release on eradicating sheep scab and BVD by 2031, Nigel Miller was interviewed by BBC Farming Today. [Catch up on the programme here.](#) For more information on sheep scab visit the [SCOPS website here.](#)

Meet the steering group



Robert Craig, RABDF trustee and First Milk vice chairman

Robert Craig currently oversees three dairy farming businesses covering approximately 2000 acres across Cumbria and Northumberland milking around 1500 cows. All three dairy units are managed on pasture-based systems producing high constituent milk for the farmer-owned co-operative First Milk.

"Through RH&W it's essential we drive greater awareness of good practice and its link to productivity. In setting clear industry benchmarks we can deliver wide ranging improvements in health and welfare, improvements we can be proud to stand behind and can use to promote what we produce."



Amanda Carson, BVSc MRCVS ARAgS

Amanda graduated from the University of Sydney in 1988 followed by 15 years as a partner in rural mixed practice in Cumbria. She then joined the governments Animal & Plant Health Agency (APHA) in 2006 and in 2014 became the Small Ruminant Species Expert Group lead for scanning surveillance. In 2020 she was appointed the President of the Sheep Veterinary Society.

"Communication is key! I hope that my contributions from our surveillance activities will support the aims of RH&W by providing evidence of disease threats that impact on health, welfare and production and inform policies which can make UK sheep farming the best in the world."

[See the rest of our steering group members here...](#)

Other news from the industry

- The Action Group on Johne's is holding a [half-day virtual seminar on 21 July](#) to launch the new Johne's Disease Tracker test result interpretation tool, outline the BCVA training programme for vets, and present the updated Action Group on Johne's scheme website.
 - Some important rule changes to the Johne's Disease Risk-Level Certification Programme are planned for 1 October 2021. [CHECS has explained the rules](#).
 - A united message from sheep sector on use of newer wormer actives has been highlighted in [an open letter from NSA, SCOPS, Moredun Research Institute and SVS](#).
 - In keeping with our announcement about ambitions to cut dairy low lameness by 30% year-on-year, AHDB has announced Welsh dairy farmers will get more access to [lameness advice and support](#) thanks to an increase in the number of trained experts.
 - The University of Liverpool is running [a survey on cattle parasite control at grass](#).
-



Ruminant Health & Welfare

Cattle and sheep health and welfare priorities – a
'grassroots' survey across the four nations of the UK

MAY 2021



Survey carried out by RH&W
Analysis and report generated by AHDB, with additional commentary from RH&W

www.ruminanthw.org.uk

Read the full RH&W results report

These results are some of the first which truly take into account those at the coalface of farming, who deal with these diseases and conditions on a daily basis.

We look forward to this report playing an important role in setting strategic goals and activities for RH&W and the wider industry across the four nations over coming years. [Read the full report here.](#)

We are an independent, industry-based body tasked with helping farmers and stock managers tackle sheep and cattle disease, and build the health and welfare status, resilience and production efficiency of our national flock and herd.

Our Aims

- **Prevent, manage or eradicate** - those diseases with the greatest impact on health, welfare and productivity.
- **Identify opportunities** - for practical and effective farm-level interventions that support the four nations ambition of being among world leaders in animal welfare.
- **Address** - inherent challenges in current and future farming systems that could lead to health and welfare or reputational challenges.
- **Champion** - high health and welfare standards, and other priorities relating to domestic or overseas markets for the four nations.





Copyright © 2021 Ruminant Health & Welfare, All rights reserved.

You are receiving this email because you expressed an interest in RH&W or have opted in via our website.

Our mailing address is:

Ruminant Health & Welfare

(c/o AHDB),

Unit 201 5th Street, Stoneleigh Park

Kenilworth, Warwickshire CV8 2TL

United Kingdom

[Add us to your address book](#)

[Forward to a friend](#) or [subscribe and get RH&W news straight to your inbox.](#)

Want to change how you receive these emails?

You can [update your preferences](#) or [unsubscribe from this list.](#)

